

Our Top Asks of Government



Federal

- Expand funding for housing for people with diverse abilities
- Incentivize adoption of accessibility and care occupancy standards (e.g. B3 Fire Code)
- Include ICC in national housing strategy discussions



Provincial

- Fund both capital and operating costs of inclusive housing
- Fast-track approvals for non-profit supportive housing
- Align housing and health supports



Municipal

- Prioritize housing for people with diverse abilities in official plans
- Provide land and waive fees for non-profit housing
- Support inclusive zoning and local public education

OUR MESSAGE

We're ready to help our members deliver the housing solutions people with diverse abilities need—but we can't do it alone.

We need partners at every level of government.

Learn more at:
intentionalcommunity.org

Join Us, Get Involved.

"We thank the many volunteers who sit on the Board, contributing their time to facilitate advocacy efforts (Day on The Hill), seminars and professional educational opportunities. We welcome new Board members anytime."

— Gary Gladstone, Chair (Reena) and David Petkau, Vice Chair (Karis)

INTENTIONAL COMMUNITY CONSORTIUM

315 - 1 Promenade Circle
Thornhill, Ontario L4J 4P8

(437) 833-2392
info@intentionalcommunity.org



VISIT OUR WEBSITE FOR
MORE INFORMATION
intentionalcommunity.org

Intentional Community Consortium
 www.linkedin.com/company/intcommunity/



SPONSORED BY

Property Law FIRM CB LLP

A NATIONAL VOICE FOR Housing for People with Diverse Abilities

Helped Secure
2,400
Units Nationwide

50+
Members
Across Canada



Intentional Community Consortium (ICC)

The ICC is a national coalition of over 50 organizations working to address Canada's urgent shortage of supportive housing for people with diverse abilities.

Our members don't just talk about solutions—they take action.

Since 2017, ICC's advocacy helped secure 2,400 units through Canada's National Housing Strategy. Only half of these were built and thousands of people are still waiting.

OUR MISSION

To support the creation of inclusive, affordable housing across Canada by:



Partnering with all levels of government



Supporting developmental service providers



Promoting inclusive design, care occupancy, and accessibility standards



Growing National Challenges Faced by People with Diverse Abilities.

TARGETED INVESTMENT

All levels of government should provide affordable solutions to these challenges.

Working-Age Adults Living Below The Poverty Line¹

With an intellectual disability (73%)

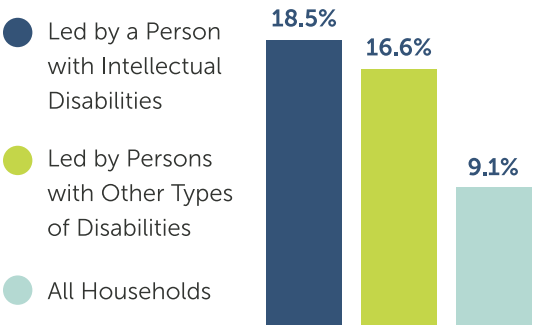


Without an intellectual disability (23%)



Households Living in Core Housing Need¹

Housing that is unsuitable, inadequate, or unaffordable

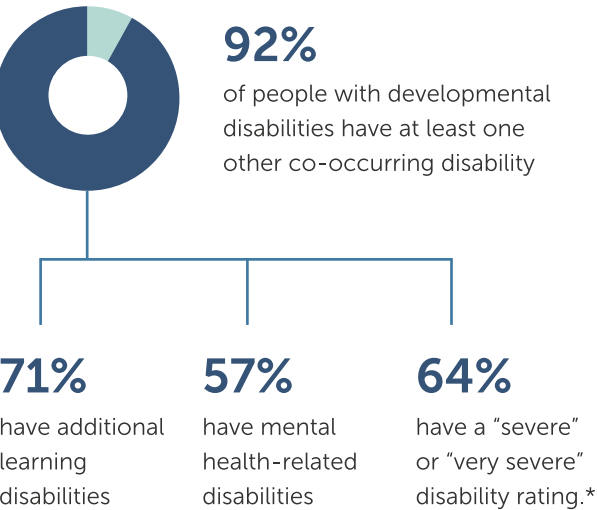


Homelessness²



Over 18% of people in homeless shelters have a developmental (intellectual) disability.

Multiple Disabilities³



**Reflecting high levels of impairment and support requirements.*

REFERENCES

1. inclusioncanada.ca/position-on-financial-security-income-support/
2. Dr. Sylvain Roy, PhD, Past President Ontario Psychological Association
3. www.canada.ca/en/public-health/services/publications/diseases-conditions/infographic-developmental-disabilities-disorder-highlights-canadian-survey-2017.html

BUILDING THE FUTURE Our Member Projects

The supply of affordable, accessible, and supportive housing for people with diverse abilities remains far less than the need.

A home of one’s own is the cornerstone of independence for ALL persons.

Completed Projects



KW HABILITATION MODULAR STRUCTURE

KW Habilitation modular structure built for 2 adults. These offer so many possibilities—like fitting in a backyard or stacked as apartment units.



CAFFI HOUSING: SHILOH HOUSE

CAFFI Housing collaborated with Raising the Roof to restore a heritage building as an affordable rental, piloting an innovative home-share model.

Future Projects



FRANKFORT FAMILY REENA RESIDENCE

Reena’s 3rd Intentional Community, the Frankfort Family Reena Residence in Toronto will have 111 self contained rental apartments for 168 tenants.



LAWSON DEVELOPMENT

Community Living Toronto’s Lawson development in Toronto will be designed to be inclusive, accessible, and transit-friendly, making it easy for everyone to get around and participate in the community.



PARENTS FOR COMMUNITY LIVING AND MENNOHOMES

- Mixed-use building.
- St. Paul’s Evangelical Lutheran Church and Parents for Community Living occupy the main floor.