



River House / Artwork Tower

**L'Arche Toronto**



River & Oak House  
In Collaboration with  
The Daniels  
Corporation

**Daniels**  
love where you live™



Oak House / Daniels on Parliament

# New Housing Model for L'Arche Toronto

- Why a new Model ?
  - Changing Needs of the Core Members at L'Arche Toronto
  - Current homes only partially accessible
  - Enable long-term living (age-in-place) in our community
  - Diversify existing housing options
  - Opportunity to welcome/ support more people and grow the capacity of the organization



# Developing Housing in a Condo Development

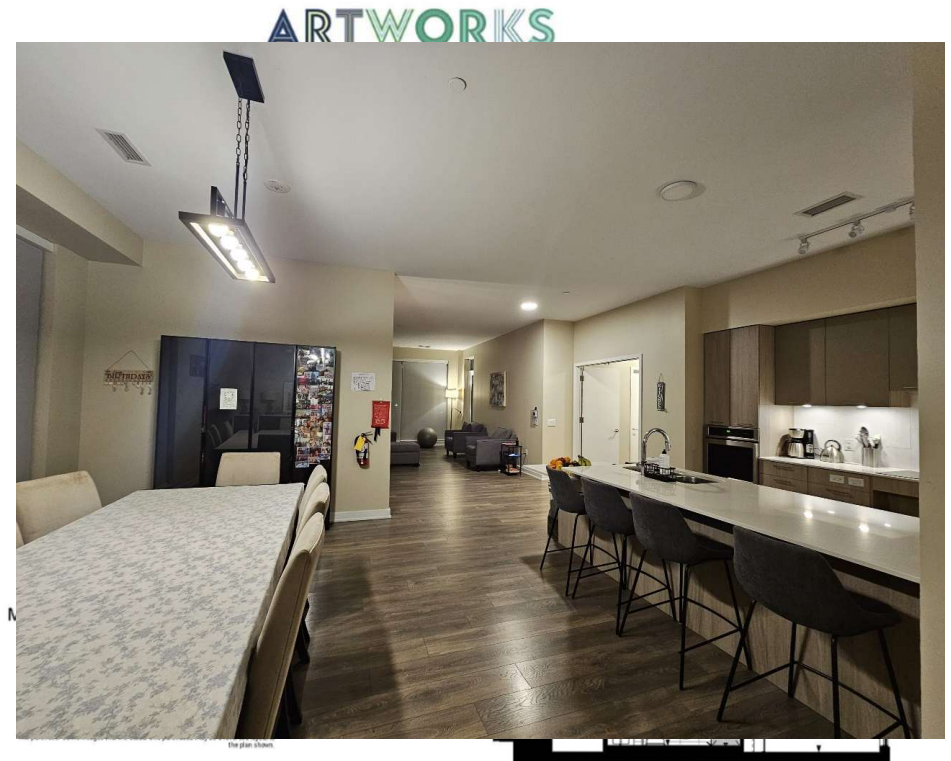


- Engagement with TDSA Housing Committee:
  - Workshop with Service Providers, Architects and Developers
- Accessibility Design Program (ADP) by the Daniels Corporation (Jake Cohen)
- Collaboration with the Daniels Corporation grew into a strong partnership, resulting in the co-design and development of River House and Oak House.

## L'Arche Toronto River House

### Floor Plan

- Total Suite Area: 4442 sq. ft.
- 8 - Bedrooms (co-housing model)
- 3 - Bathrooms (incl. fully accessible bathroom)
- Open Concept for Living/  
Dinning Room and Kitchen



# OAK HOUSE



## Floor Plan

- 2 Interconnected 3-bedroom units
- Each apartment is designed to function independently, with its own kitchen and dining area
- Joint TV/Media room connecting the two units
- Terrace adjacent to the court yard of the entire building

## Key Learnings ?

- Housing development is a long-term process that demands patience and sustained commitment:
  - River House 8 Years (2015 – 2023)
  - Oak House 4 Years (2022 – 2026 (July))
- Building vs. Purchasing
- Purchasing Approach:
  - Engage in a co-design process with the developer to influence design from the outset
  - Partner with a reputable developer aligned with organizational mission to accomplish the project
- A strong Board willing to take strategic & financial risks



# Contact Information:

## **L'Arche Toronto:**

Cassie Wilson (Executive Director): [cassie@larchetoronto.org](mailto:cassie@larchetoronto.org)

## **L'Arche Daybreak**

Raphael Arens (Project Manager): [raphael@larchedaybreak.com](mailto:raphael@larchedaybreak.com)